

THE FIRST ELECTRONIC HOME LIFE STYLE MAGAZINE IN SERBIA ■ YEAR I ■ MARCH 2010. ■ N°4

# MINI studio MAGAZIN



THEME OF THE NUMBER:

“VILLA  
ALLEGRA”

DESIGN HOTELS:

“An entire plane  
all to yourself!”

HEDONISM OF TASTE:

“The restaurant RAMSES  
Philippe Starck”

www.ministudio.rs

ISSN 1821-3510



your style your identity . . .

- projecting
- design of interiors
- consulting



[www.ministudio.rs](http://www.ministudio.rs)

# CONTENT

## HOME STYLE

■ ARCHITECTURE	"VILLA ALLEGRA"	04
■ WHAT'S NEW		12
■ INTERIOR	"Food for body and soul"	14
■ FENG SHUI	"Dining room"	18
■ DESIGN	"Chair - historical inspiration"	20
■ NEW WAVE		26
■ DÉCOR	"Table decoration"	28
■ LIGHTING	"How to illuminate a table"	32
■ YOUR CORNER		36

## LIFE STYLE

■ DESIGN HOTELS	"An entire plane all to yourself!"	38
■ TAKE A TRIP	"Where sky kisses the ocean -MALDIVES Elite ski resort - MADONNA DI CAMPIGLIO"	42 44
■ ON THE MOVE	"The future is coming - TESLA"	48

## FOOD & WINE STYLE

■ HEDONISM OF TASTE	"The restaurant Ramses – Philippe Starck"	50
■ BLACK & WHITE WORLD	"Chablis"	52

- Editor-in-chief  
Mina Petijević
- Art Review Editor  
Milica Mandić
- Graphic Editor, Design and Preparation  
mini STUDIO design team
- Editor of Photography  
Miloš Nešić
- Technical Editor  
Marko Antonić
- Lector and Copyreader  
Sonja Božović, Milena Vulović
- Associates  
Milica Drobnjak, Marina Vasilčić,  
Ratomir Živković, Vuk Petijević,  
Ana Nešić, Ana Polić
- Advertising  
advertising@ministudio.rs
- Editorial office  
Lomina 7/1, 11000 Belgrade, Serbia  
+381 11 2685 086  
magazin@ministudio.rs  
www.ministudiomagazin.com



## A WORD FROM THE EDITOR

Want to live in style? Are you longing for relaxation, pleasure, hedonism? If you are looking for satisfaction that fulfills you, in this issue you will certainly find suggestions for achieving your desires and preferences. ■ I believe that each of us would like to luxuriously decorate our corner or to live in a modern home. Villa Allegra is an excellent example of luxurious living in Miami. ■ Dining room, as one of the most important rooms for family gatherings, deserves a special attention. Read our suggestions for its organization, decoration, lighting... ■ New car with electronic propulsion – TESLA, witnesses that the future is coming. Do not miss the opportunity to see its perfect design. ■ Take a trip with us to the Maldives and Madonna di Campiglio, take a seat in the fully equipped hotel aircraft and experience the atmosphere of Ramses restaurant in Madrid. ■ Or simply open the bottle of Chablis... and enjoy...

# VILLA ALLEGRA

## THE REFLECTION OF STYLE

*“The important thing is to create a setting that enables you to enjoy Miami: the water, the sky, the trees. You should be able to breathe the atmosphere, and the house is secondary to that. For me, architecture is a way to appreciate the environment. Wherever possible it is the starting point of all my designs.”*

*Chad Oppenheim*

Architect: **Chad Oppenheim**

Scope: **9,000 SF private residence.**

**Architecture/Interior design**

Date: **Project completed 2004**

Location: **Miami Beach, Florida**

Photo: **Ken Hayden**

**[www.oppenoffice.com](http://www.oppenoffice.com)**







A young Chad Oppenheim, recognized as a world-class architect, not only in Miami, but nationally. He designed with his mother their house in New Jersey, when he was only 9 years old. Its design reminds on his new modernist temple, which he and his wife Ilona, built after they had torn down an existing ranch house.

“It’s the love I feel for that beautiful creature walking through the garden,” Chad said, indicating Ilona. “It’s like being in love – it focuses you to beauty.”

With an obvious lust for life, luxury and the finer things, the owner of this palatial revels in a resort-inspired life-style. The 9,000 sq. ft. of modern opulence leave nothing to be desired. Oppenheim Architecture has designed Villa Allegra’s with as much attention paid to outdoor living spaces as indoor.

Multiple rooms, both interior and exterior, have been added to a non-descript, one-story home transforming it into a receiver of Miami’s tropical climate. While the effect

*Furnishing is the outer expression of our inner style.  
Philipp Selva Home.*

*Philipp Selva*



Photo: Vogelsänger Studios, Germany

**Exclusive Agency for Serbia & Montenegro:**

Vittor Italian Agency Tel: +381.63.8612476

Info: Beograd@vittor.it

[www.selva.com](http://www.selva.com)



PHILIPP  
SELVA



is striking, minimal alterations were made to the existing structure. The house is entered through a 20'x30'x30' volume where a reflecting pool and oculus align to activate the space with reflection and luminance, which creates an awe-inspiring welcome for residents and guests.

A large room organizes the house into private and public realms. Tremendous spaces with oversized windows overlook the pool and canal. A 60'x20'x20' volume, at the rear of the home provides enclosure for outdoor living. A large circular column contains an outdoor shower open to the sky.



# saba

ITALIA

Livingston  
design Giuseppe Viganò



SPECIAL PROMOTION FROM 15th MARCH TO 15th APRIL

[www.sabaitalia.it](http://www.sabaitalia.it)

Exclusive agency for Serbia & Montenegro Vittor Italian Agency Tel. +381.63.8612476 [beograd@vittor.it](mailto:beograd@vittor.it)

- HAUS  
Žorža Klemensova 19  
11000 Beograd, Serbia  
t. +381.11.3281713

- ARTEFACTO  
Svetogorska 39  
11000 Beograd, Serbia  
t. +381.11.3226467

- GRAND STIL  
Bulevar Oslobođenja 30b  
21000 Novi Sad, Serbia  
t. +381.21.531066

- EUROSALON CG, P.J. JAZ  
Industrijska zona  
85310 Budva, Montenegro  
t. +382.33.463159



Inside, the home's grand scale is enhanced by tall ceilings and unusually wide doorways, which connect the various living areas while simultaneously dividing them. The second floor contains a secluded courtyard garden, off the master bedroom, for private activities. The project

provides a flexible infrastructure for the participation and enjoyment of the pleasures of life.

Miami vice is a pleasure-seeking hedonism...

Mina PETJEVIĆ ■



# LUXURY APARTMENTS IN YOUR OWN STYLE

NEW APARTMENTS IN THE HEART OF BELGRADE  
DESIGNED IN YOUR OWN FASHION



## FIRST CLASS GLASS

NEW CRYSTAL LINE OF HIGH GLOSS

**FRANKE** is the world's first manufacturer who introduced a production of glass sinks and connected it with steel. Glass is the last most inventive material used for the production of sinks, and a novelty that we are offering is a step in the development of style and design. High quality materials such as stainless inox 18/10 combined with tempered glass in black and white color with a factory warranty of 15 years is the best indicator of quality. Simple lines, discreet appearance and perfectly matched details make the Crystal line compatible with different materials, colors and kitchen fronts. Besides being very practical for maintaining and being very resistant, its glossy surface makes it ideal for breeding of every kitchen style, from classical, through modern, to minimalist.

Crystal concept – Love at first sight!

[www.franke.rs](http://www.franke.rs)

# WHAT'S NEW

## COINCASA

SPRING COLLECTION 2010

The new collection of Coincasa for spring 2010 replaced the previous trend that represented the collection of Casa del Viaggiatore.

This renowned Italian brand for interior furnishing for spring 2010 is a collection of modern lines, which are combined with classic provincial style. The living space equipped by COINCASA, this season is white and is usually combined with a neutral and nature shade. Furniture is decorated with details of metal, usually silver or nickel. This kind of furniture is best matched with objects and fabrics in azure blue, kiwi green, nature, dark yellow or bronze color.

Materials used this season by Coincasa are natural fabrics, silk, eco-leather and lurex.



[www.orchestra.rs](http://www.orchestra.rs)

# IMAGINATIVE FORM OF SOFA LES FEMMES

SABA ITALIA

SABA ITALIA Company strives to always surprise us with its creativity and imagination. At a Furniture Fair in Milan the innovative design of sofa created by Giuseppe Vigano, was presented. It is compatible with high backrest and comfortable seat, and is characterized with soft forms in which one can simply immerge. The original design offers unlimited possibilities of combining the three parts – headrest and armrest may be located in different positions and different angles, with which you can play. With raised armrest and backrest, Les Femmes becomes an intimate and safe sofa, and with lowered armrest it becomes a sofa that provides pleasure and wins you over, entertaining you with its lowered backrest. Backrest and armrest can be bent over to the outside using a special system of “folding in” that allows easy and quick scroll with a simple arm movement.



[www.sabaitalia.it](http://www.sabaitalia.it)

**saba**  
ITALIA

# NEW LINE TZSAR

PHILLIP SELVA HOME COLLECTION



**SELVA** Company with its latest collection of Philipp Selva Home Collection justifies its philosophy that the thing which inspires it is in fact love for people. It doesn't just want to create furniture; it also creates the environment that will make people happy.



Dining table from the line Tzsar of the Philipp Selva Home Collection is presented. Tzsar is a modern glass table which can be very elegant solution for equipping dining space.

The glass top can be enriched to a dining room and a work room. The combination of an original massive base and transparent glass is excellent. Irregular lines from which the base of the table is made create a sophisticated effect and make this table fit into any style of interior.

[www.selva.com](http://www.selva.com)

# FOOD FOR BODY AND SOUL

Every home is a reflection of people living there, especially housewives. One of the favorite places for gathering often is a family dining room which must own aesthetic and functional side, in order to make you feel as pleasant as possible. It is a place that must radiate with warmth and good atmosphere, but also to provide a sense of security. If you establish harmony among these two things success is guaranteed.

Dining at the table not only nourishes the body, but also symbolizes friendship and harmony. In the past, dining room was exclusively used for special occasions, but today people want to feel comfortable in their homes and to enjoy every moment.

However, most modern apartments are not spacious and dining rooms are cramped or incorporated into living rooms and kitchens. Therefore it is important to choose the appropriate furniture and with good planning to form the whole, in order for it to simultaneously be used for solemn gatherings, as well as for everyday family meals.

**KITCHEN + DINING ROOM** are a good solution because the floor is coated with ceramic tiles which are easier for maintaining good hygiene. If this is the case it would be best to block the view to the kitchen with the bar.





**LIVING ROOM + DINING ROOM** can be solved depending on the size of a living room, your habits, style that you aspire to, etc.

Very important item when planning this room is the appropriate dining table which basically dictates the future look of a dining room. It is important to note the dimensions. Table height is 75cm and the chairs 40cm. Distance from the table to the wall is minimum 80cm in order to smoothly pull out the chair.

How many people will sit at the table and whether it's round, oval or rectangular shape depends on your aspirations as well as the dimensions and shape of the room. If you are thinking about the position of the table, usually it's placed in the middle of the room which doesn't mean that it is the most practical solution. The round table can accommodate more people, but the rectangular table takes less space because it can be placed to the wall.

We are suggesting the following tips that can be helpful when planning your dining room:

- Make sure that the dining room is separated from other rooms, so that after lunch or dinner you can enjoy talking to your friends uninterrupted;
- For formal occasions it is preferable that the dining room doesn't have aimed views to the kitchen where meals are prepared, because the impression is certainly stronger when food is prepared by the "invisible cooks";
- Dining room should be located and organized so that bringing of food runs without difficulties;-It is recommended that the dining table is located near the kitchen;
- You can set the carpet under the table or a path with joyful patterns and soothing colors, parquet with some ornament, or marble, granite;







[www.kare-beograd.rs](http://www.kare-beograd.rs)

- Walls should be painted in one color if you have an unusual design of the table and chairs, while if the situation is opposite you can make a game of colors, techniques, or even choose decorative wallpaper;

Dining room leaves a striking impression, above all with reduced forms of furniture and lighting that provides an intimate atmosphere and thus creates a pleasant space for gathering and eating. It is equally important to be guided by your own individual style which will be displayed in the lines, colors, materials and recognizable details. There are mod-

ern examples of warm colors or models of world famous designers as well as minimalism and elegance, whose characteristic is a specific coloring, dark shades which provide an elegant touch.

Restrained elegance, which relies on the classical style, is the basis of the atmosphere. Especially when done with a lot of skills. Therefore, arrange your space so you and your friends can enjoy bland flavors in a pleasant atmosphere.

Ana POLIĆ ■

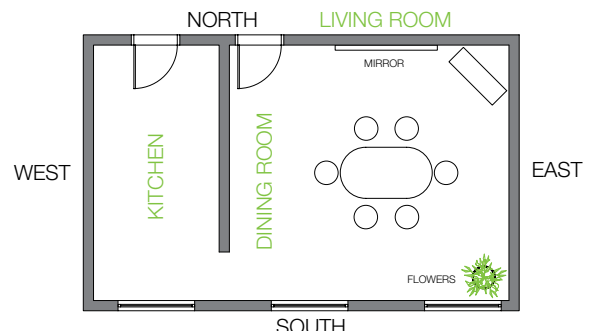


# FENG SHUI

## DINING ROOM

Regardless of appearance, style and function, dining room is a place where the youngest family members acquire basic concepts and knowledge about life, learn the manners, listen to conversations, ask and seek answers, learn how and to recognize the true values and people in complex life situations.

Feng shui has a “strict” rule when it comes to dining room. It should be warm and comfortable, room you can decorate with pictures of cheerful motifs, or with fresh flowers. Put a nice big mirror, which “multiplies and increases” the food and space. When setting up the mirror, make sure that the front door and windows don’t reflect in it. In a free corner, set a nice sax with flowers. Dining table is placed in the middle of the room with chairs around it. Cabinets and shelves can be placed in the dining room, but only if their appearance does not



disturb the harmony of the entire dining room. Also, be careful that one should be able to easily rise from the table and not “collide” with the furniture or wall.

There are several forms of dining tables, which equally contribute to the pleasant dining, but are still slightly different.

## DINING ROOM FURNITURE

Basic furnishings consists of table and chairs. The round table symbolizes the sky, harmony and friendship, while the quadrangular table represents Earth and resembles to stricter, hierarchical approach. The oldest family member should sit on the north side of the table, turned toward the south. The type of your table depends on your sensibility.

Chairs need to follow the table in its entity, at least when it comes to elegant forms. It would be good to choose a comfortable chair with armrest or without it, coated with fabric, leather or fur, or even designed from plastic, metal or wood.

There should be no room for other pieces of furniture in the dining room except maybe a cabinet, unless the premises cannot serve as a living room, because that would only distract attention from the central object: the table.



### ROUND TABLE OR SKY TABLE

Encourages the atmosphere of relaxed family dining.



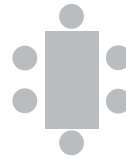
### OVAL SHAPED or TABLE OF COMPROMISE

Is good because there are no sharp edges and corners, also ideal for a large family.



### OCTAGONAL TABLE OR PA KUA TABLE

Symbolizes the five elements, which makes it very affordable. It is also known as an imperial table.



### SQUARE TABLE or EARTH TABLE

Should not be too long, because the longer it is the less it contributes to family unity. It highlights a very serious approach to dining.

Position of a dining room in a house is not of great importance, at least not as the position of other rooms. However, according to Feng Shui-the ideal dining room location is east of the kitchen, or south of it. The windows in the dining room, if it is located on the south side, should be facing the east or south, in case the dining room is located in the eastern part of the house. It is recommended that the dining room has at least two entrances, one from the living room and the other from the direction of the kitchen. In this way negative energy would not accumulate and space would breathe with serenity, which is important for dining. For this reason it is recommended that the dining room has at least two windows.

If you want symbols for your personal protection and protection of your home, instructions on their application and calculations, you can write to: [jasenka.n2@gmail.com](mailto:jasenka.n2@gmail.com)





# CHAIR

## HISTORICAL INSPIRATION

*“I designed this chair so it could be used by people from generation to generation. That will preserve her beauty. It cannot be affected by the tooth of time.”*

*Michael Thonet*

The chair has always been an inexhaustible inspiration for designers, both in past and in present time. Beside the fact that it gives us the possibility of sitting and resting, it is an essential element of planning almost every interior. Why is this piece of furniture so important? Perhaps this is best illustrated by the fact that people most of their awoken time spend in chair – dining chair, office chair...

### EGSHELL

Chair made of chrome metal tubes and technopolymer, subtle design and combination of cheerful colors, available in purple, orange and green.



The function of chair hasn't been changed through time, but its design has developed in parallel with the development of society, reflecting the development of technology, architecture and industrial design. In ancient Egypt, 3000 years B.C. chairs of various shapes had been made, although that design cannot certainly be compared with the convenience of modern models. In Europe, thanks to the Renaissance, chair ceased to be a privilege of the state and became a standard furniture item of everyone who could afford it. Suddenly it began to change and modify in accordance with the development of technologies and materials.

### PASSION

Designer Philippe Starck. Passion chair is a part of Cassinone's Privé collection which was presented in 2007. This round, elegant, compact and extremely comfortable chair is upholstered in leather, looking like a mosaic. Shell may be completely covered with leather or external part can be of great black or white plastic cast. Trestles are made of chrome or black lacquered steel. With Passion chair, Starck made homage to himself in original and eccentric manner.

www.rkbeograd.rs

**OBSESSED  
WITH INTERIOR!**

Home equipment, furniture, home textiles, wallpapers, carpets, kitchen supplies...  
Emporio Casa, Coincasa, Orient Emporium, Mega, Olympia Carpets, XXL Design,  
Stotex, Odeja, Lagado



**ASK FOR HELP FROM SPECIALIST!**

**RK "BEOGRADJANKA",** Masarikova 5

TERAZIJE 15-23, MILJAKOVAC Vreška 4, KRAGUJEVAC Dr Zorana Đinđića 13

 **Teonag**

РОБНЕ КУЋЕ

Until the nineteenth century, the only material for producing chairs was wood. Natural characteristics of wood dictated its basic form. More attention was paid to design, rather than satisfying the needs. This was the first step towards the change of the look of chair – from craft to design, towards industrial product. In the twentieth century there will be greater use of technology for their construction. Modern movement of the 60's influenced the creation of new forms of plywood and laminates, as well as the use of new materials, leather and polymer. Although, till today the most

prestigious and unique chairs are hand-made by the “master’s hand”. The design of chairs was a preoccupation of many architects, remembered by their incredible forms and models, which are still trendy even after several decades, because their superior quality takes place in all styles of arrangement. Michael Thonet, father of industrial engineering of bending solid wood, occupies a special place among the manufactured chairs of the nineteenth century. Last century has brought a number of copyright copies, such as plywood chairs by Charles & Ray Eames, Alvar Alto’s chair number

## SET

Design Piero Lissoni. Back and seat of this chair are made of curved plywood, available in dark and bleached oak. Seat and backrest can be coated in leather.







[www.selva.com](http://www.selva.com)

## SOLITAIRE

In the game of wood and Swarovski crystals, a Solitaire collection from the Phillip Selva Home Collection line emerged and sparkled, decorating your home like a real piece of jewelry.

one and Marcel Breuer's B3 chair. Eero Saarinen combines plastic and aluminum, Masanori Umeda uses stuffed cloth and Eero Arnie's design of chairs with hollow spheres made of fiberglass and reinforced polyester marked the 60's of the previous century.

In modern society the needs of consumers are diverse and new standards are set for designers every day. We will certainly be fascinated by the new ideas of designed chairs in future...

Milica DROBNJAK ■

# NEW WAVE

The concept of the "oval line" is to ask for a close concept in the range of "textile care". Textile care materials are represented in Design on a very low level. That is the reason why we should think about working on products in this range.

Nils Wodzak design the "oval line" for small living spaces following the form of an "normal" ironing board. He searched and encircled functions which are associated with textile preparation, storing in small living spaces and use - and helpfull application. So it is not a compromise in between this range.





The product compressed these functions 100% for each. It's a middle sized ironing board, easy to handle, powered by a mirror on the backside for checking out your style and room for storing your iron. Each applications are usefull and follow logical sense in one product: mirror-ironing board-closet. The clean and silky body, unique and well balanced form, from the close view you can never suppose that it is an ironing board. The junction which brings together these functions is not occupied; making you confused at first and than making creative sense.

The constuction is also based on what the ellipse can do: the pressure while ironing is absorbed by the corpus (ellipse). The ellipse is "working" for that as a big clasp. The electric versions are combined with lamps, color filters an power plug inside. So it will glow your room if you want.

**Material: "oval white line s/xl" made of Makrolon**  
**"silver line s/xl" made of Aluminium**

# TABLE DECORATION

Table or desk is one of the central places for socializing, meeting with friends, relatives and dear people, for celebrations, business meetings and romantic dinners. Every day we use desk or table so we are used to that piece of furniture, and often we forget to honor it with some attention that it deserves.



Even when we are alone, we should take the time to decorate the table so that dining represents a kind of pleasure during a busy day. With a little effort we can make the table so beautiful that it embellishes every gathering or a simple meal, because with good company, delicious food and great wine that we enjoy, the visual effect will complete the impression.

The right choice of a table cloth is the basis for further decoration of the table. Although its main purpose is to cover and protect the table, its decorative role overcomes that purpose. Depending on the color and style of dining opportunities you can choose linen table cloths, damask, lace, silk, cotton cloth or other natural materials. There are table cloths that are made for certain holidays and with their colors and patterns they highlight the holiday atmosphere, like the décor of Christmas or New Year's dinner. Like tables, table cloths can be found in three basic shapes – square, round, rectangular and oval. They can also be combined with over-cloths and napkins.

Plates are the next step, where the rule of matching table cloth and the style of the dining room is enforced, as well as matching plates with the food that is to be served. Selection of plates on the market is large and you can find everything that you can think of. From the highest quality porcelain with classical motifs, modern design with incredible shapes and colors to different materials – glass, wood, stone, ceramic or synthetic matched even with the patterns of your dining chairs. Plates are a beautiful decoration of each table, but please be careful when you use the plates in black, since some dish-



es can behave poorly if they are without color. The choice is certainly yours.

Serving bowls are usually, but not necessarily from the same line as the plates, because they should be compatible. Glasses and cutlery should certainly harmonize their style and design with the plates. This way your table is almost complete and perfectly decorated.

In the end, you can put a flower arrangement in the center of your table, or maybe a candlestick or any other element of decoration, but set it low so it doesn't block the view of the guests when they communicate.



Start a search for your perfect table cloth, plates, glasses, cutlery and accessories, you will probably be surprised with the offering of different styles and you'll find the right one, the perfect style for you. You can complete a décor of your dining table with placing mirrors, pictures, elegant vases ...

Classical or modern, perfectly designed high quality, the choice that will make you dizzy. Make the real choice, beautify your friendships and make this table your favorite place for gatherings, where you'll enjoy with special people.



# coincasa

Prodajna mesta: Zira Centar; Robne kuće Beograd - Beogradanka, Terazije; Delta City

# HOW TO ILLUMINATE A TABLE

Since old times, pictures and writings describing important historical events which were discussed at the dining table are dominant. At that time, there was certainly a kind of light that kept its use till today. Chandeliers with candles and candle holders today can be noticed in interiors of many restaurants and cafes, and we are certain that you turn them on from time to time in some romantic moments with your significant other.

Table is the dominant element of the dining room above which is the best to place a chandelier as a decorative detail that will bring a special aesthetic note and will still accomplish its function and illuminate the space for dining. In this environments light should not be excessive, because in order to better highlight the table and elements in it, you can create a counter effect. Problems that occur in these situations are the use of strong light bulb, which creates an unpleasant elevated heat or glare on the table surface. This can be solved with an elegant dimmer because in special moments you can dim the light and create an atmosphere like a romantic dinner under candle light.









Other elements of the interior that should be illuminated are the bar, if it exists and shelves with bottles of drinks and cabinets with glasses. These are the most inspiring elements regarding the design of light in the dining room, because with good lighting and emphasizing certain parts of space you can achieve a remarkable effect. A bar, regardless to its design can be complemented with routers hanging lamps. If you are considering the use of light inside the bar, there is a whole range of ideas for the implementation of LEDs and color. You can make an interesting detail for the bar with placing the glass surface at the top below which you can sprinkle white pebbles with optical cables with illuminative tops and that way create a shimmering effect. They can also be illuminated along one side of the entire bar with cold white light, which would achieve a great reflecting effect of white stones.

With showcases and shelves, light emphasizes the objects whose form dictates the type of light. If the subject has full form (e.g. bottle of wine) and we want to emphasize it, we will direct the light from the front, in order to highlight its face. Additional effect can cause a diffuse background light, the subject will be in a shadow, a silhouette of the subject and background will shine, which may also be interesting. This effect is ideal for glasses and glass elements in particular, which are transparent and cannot absorb the light. If you illuminate their surrounding, especially background, with cold white light you'll get the shaded edges and translucent object. In crystal glasses with ornaments light would diffract and the reflection of crystals would create the effect of scattering on the surrounding walls and objects.



Dining room is a space that joins taste and creative details together, because the romantic ambience makes a person

happy. Dim the light, light candles, prepare your favorite food, open a bottle of wine and enjoy ...

Marko ANTONIĆ ■

**ULTRA**  
new concept power saver

# YOUR CORNER

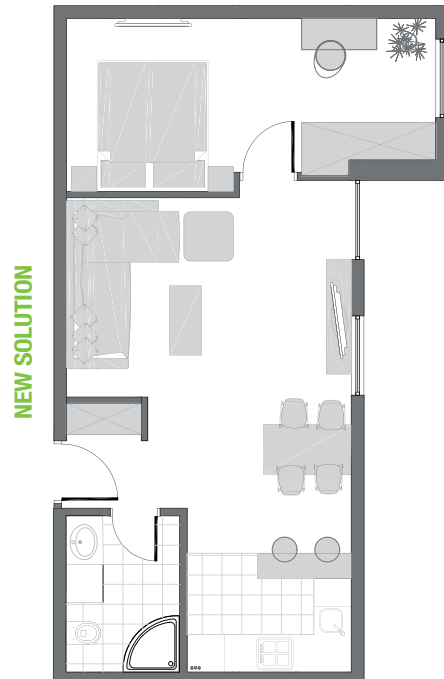
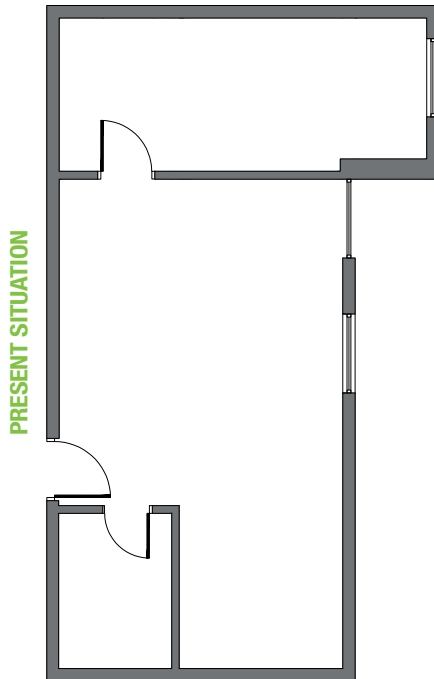
"Dear all, I am asking for your advice. I need an idea for the solution of an apartment in a recently completed building. It is 53m<sup>2</sup> apartment, in which a bedroom, living room, bathroom, kitchen and a dining room should be placed."

A 53m<sup>2</sup> apartment is located in the newly built residential building. It has one and a half room and is intended for one person – a young man. Function is formed according to the "youthful" needs and accordingly we are suggesting a following solution.

Regarding the layout of rooms we are separating day from night zone. Kitchen, dining room and living room are con-

nected in a compact entity. We are forming an "open space", making this room visually smaller, we are broadening and creating the impression of comfort.

In order to isolate living room from the entrance zone it is best to place the dividing cabinet, and that way block the view to the bathroom. Bathroom and kitchen are regulated in accordance to existing installations. Elements of kitchen are placed





in shape of a letter “L” and are separated from the dining room by bar.

Interventions in terms of demolition of walls were reduced to a minimum. Only the wall between bedroom and living room is moved, because of the required width of passage for access to the bed, as well as the entrance to the bedroom.

In addition, we will enliven surface of the walls with bright colors. In this case we suggest an effective yellow-gray com-

ination. In the gaps of a lowered ceiling, it is interesting to set the lighting on the edges, because the surfaces will look like floating in space.

All you need to do now is fill the entire atmosphere with decorative plants, paintings, decorations and good lighting... Enjoy!

Milica MANDIĆ Interior designer ■  
ministudio ■ ■ ■

If you have resolved your housing problem and are facing equipment, adaptation and regulation issues of your new living space or wish to bring in novelties and beautify the atmosphere of your home, the architectural “mini studio ■■■” offers professional advice and suggests solutions. Write to us at the following address: [office@ministudio.rs](mailto:office@ministudio.rs). Send a sketch of the apartment with indicated floor space, dimensions of space (length, width and height) with a position of windows (their dimensions) and state the purpose of the space, your personal data (name and surname) and contact telephone number.



# AN ENTIRE PLANE ALL TO YOURSELF!

Take a seat in the fully equipped cockpit of this plane, which is nearly 40 metres long, and believe yourself to be a pilot.

The entire airplane has been converted into a single luxury suite for two guests. This means you have the complete craft at your disposal – including its top-flight facilities, which include a Jacuzzi, separate shower, infrared sauna,

mini bar, 3 flat screen televisions, blu-ray DVD player with a comprehensive collection of DVDs, a pantry with oven/microwave combination, coffee and tea maker, free wireless internet, air conditioning, etc.

In addition to offering luxury accommodation, the airplane can also be hired as a meeting space. Is there anything easier than flying to Teuge airport from around Europe and then parking your business jet alongside air-craft suite? You will find every possible technical meeting facility on board, for your catering needs. This special location can accommodate ten to fifteen persons comfortably for a meeting in total luxury.

The plane is an Ilyushin 18 and was built in 1960. In its first years, it served as a government plane for the DDR top dogs, including Erich Honecker. From 1964 to 1986 Interflug, an East-German airline company, used it for flights to countries like Cuba, Russia, China and Vietnam. It could accommodate a total of 120 passengers and a four-man crew in the cockpit. After the German unification the plane served as a restaurant for 15 years until it was acquired by Hotelsuites.nl in 2007.





Teuge airport is situated at the centre of the city triangle of Deventer, Apeldoorn and Zutphen. These historic cities all boast a large and varied shopping experience.

If you are a nature lover, you can visit the Veluwe nature reserve or Bussloo, a recreation area that offers swimming, fishing, hiking, golfing, horseback riding and diving facilities. Here, you will also find Thermen Bussloo,

a very special and exclusive sauna, beauty and spa resort. An alternative is Veluwebron, a five-star sauna complex. If you prefer golf, there are several golf courses in this area.

If you have a fear of flying, this is the ideal opportunity to relax...







## WHERE SKY KISSES THE OCEAN

# MALDIVES

Maldives are certainly a tourist destination of your dreams. Tropical paradise, ideal for relaxation and enjoyment in winter months, famous for its untouched nature, pearly white sandy beaches, hidden lagoons full of live corals, tropical vegetation... There is a variety of activities in the sun or under water that will make you return to this part of the world every year.

It is an island country in the northern part of the Indian Ocean, located 300km southwest of India and 450km south of Sri Lanka. It consists of a group of 282 coral islands – atolls, with a maximum altitude of 1.8m above sea level, located around the Equator. Only 202 islands are inhabited with local population – Indians, Africans and Arabs, and 80 uninhabited islands were turned into

resorts. Airport is on Hulhule Island which is covered by a runway.

This island country is the fourth most densely populated country in the world. It is known for strict laws that rely on the Islamic religion. The capital of Maldives is called Male and is rich with many cultural and historical sights. You



must certainly visit the main Mosque Hukuru Miskiiy which was built in the 17th century and whose walls are decorated with coral blocks.

Temperature ranges around 25-30°C, and the sea is cooler only for 3 degrees, although at night it is warmer in the water than outside. Tourist season runs from December to the end of April, because in May short but heavy rain starts.

The population is friendly and good-hearted. From Male you can go on 1 day trips with traditional boats “dhony” and “vedis” to other islands of the country. At sunrise and sunset the sea is full of these boats. The official language is Divehi, but you won’t have problems even if you use English, German, Italian, because the hotel staff know these languages. When buying souvenirs pay attention to those made of turtle shell, pearls, red and black coral, because their export is strictly prohibited.

Villages on the islands where natives live should be visited without a doubt, because the experience is unique. According to Islamic law, which is enforced there, no foreigners should be kept in the village after sunset. Of course, the Maldives story would not be complete without the main activities for which this island country is famous, and that’s diving. Underwater flora and fauna attract many tourists and for those who are not fans of diving outside of water there is a beautiful world that is waiting to be discovered.

You have certainly wished to visit this island without the horizon, where the turquoise sea merges with the serenity of heaven ... irresistible ...

# ELITE SKI RESORT MADONNA DI CAMPIGLIO

The famous elite ski resort Madonna di Campiglio, situated in a valley Randeda at 1.550m above sea level, below peaks of Adamello Brenta massive, in the nature park of Trentino area, near the Italian-Switzerland border. It is rich with a century old pine trees, once was hunting ground for Habsburgs. Son of a Habsburg emperor had turned the village into an important tourist center, which became known throughout the world.

The fact is that the ski trails had been customized for skiers with a medium level of skiing skills, so feel free to enjoy its charms even if you aren't a top skier. It should be noted that there are nearly 57 lifts and about 150km of trails. The village is situated at 1500 meters above sea level, and most trails are on the 2600m. Lifts are perfectly connected, so you can move from the city center and go over tens of kilometers without taking of the skies from your legs. The most famous track is the "3 tre" where world cup races in giant slalom are held. Fifteen kilometers of path are intended for ski running (two trails are illuminated) and there is a park for snowboarding.



Madonna di Campiglio is very nicely organized village, with pedestrian area in the center, where the main thing is to “see and be seen”. Night life is very popular, too, because there is a wide selection of bars, cafes, restaurants, discotheques which you must visit. Do not be surprised if after the whole day of skiing on beautiful sunny slopes with shimmering snow, you meet a celebrity at night. Cappuccino in cafes is typically Italian, not too expensive but with wonderful taste.

Northern Italian region of Trentino is famous for its wide range of “Apres-ski” (after skiing) fun. Who prefers a family atmosphere will find it in Pinzolo or Andalo. Vali di sole (sunshine valley) which is connected to Madonna di Campiglio with ski slopes offers many winter activities for everyone’s taste.

Madonna di Campiglio is a paradise for medium or advanced level skiers because of the most developed red slopes. There are 13 red slopes, 16 blue (for beginners) and 5 black (for experts). If you decide to take a break from skiing for one day you will probably enjoy a walk through Trento. You must certainly see beautifully decorated facades of renaissance palaces in Via Belenzani. There is also a cathedral built in the 11th and 12th century, with lavish frescoes.

By the early spring there are ten more days left, so now is the right time to go skiing and catch the last wave of winter. Visit the ski resort of jet-set from Milan and all over the world.

Marina VASILIC ■



# THE FUTURE IS COMING - TESLA



Design elements are borrowed from several cars. Former designer from Mazda Company, Franz Von Holzhausen designed Tesla Model S design of the car and successfully combined the best traits of the design of Maserati, Jaguar, and Porsche Panamera.

After the possibility (published 2008) for the car to be a hybrid vehicle was rejected, an American company "Tesla" fully presented the long awaited family limousine on electric power. Production of the model "S" is announced for the third quarter of 2011 provided the company has funds, and already the first week after showing a prototype, 520 pieces were ordered.

The vehicle secures 5 seats, with 2 optional for children, turned into a counter direction. The first sedan of this company is 4978mm long, wheelbase is 2959mm, while the wheel size is 21", with tires size 245/35ZR21 front

and 285/30ZR21 rear. Breaks are from a brand Brembo with 6 piston breaking pliers and 405x34mm front disks and 4 piston rear pliers with disk dimensions of 380x28mm.

The distance that this vehicle would be able to cross between the two charges will depend on batteries, and will be between 260 and 480km. For now, there is still a possibility for the company to rent or give on lease the most powerful batteries that provide 480 mileage between charges, and with the existing battery capacity of 42kWh it will run about 260km, and they could to be charged with a QuickCharge system for only 45 minutes.

Charging is possible with the installation of voltage 110V, 220V and 440V, while the charging energy voltage of 220V will last for 4 hours. Announced warranty for batteries is 7 to 10 years, and for the car 3 to 4 years.



In the interior, big LCD screen will be placed instead of the instrument panel, as well as the large central screen of 17", which is sensitive to touch. It will have a constant 3G internet connection with which it will be able to monitor Google Maps or to check the battery status via iPhone or Laptop.

As for the performance, this model will have an acceleration of 0 to 100km/h in 5.6 seconds, and its maximum speed

will be 193km/h. Customers will be able to order a Signature version with limited performance, which will be produced in 2000 copies. Price in North America should be \$57.500, while in Europe it will be sold for 57.400 euros.

Vuk PETIJEVIĆ ■





200

New PEUGEOT RCZ  
FULL OF EMOTIONS



VERANO MOTORS

[www.peugeot.rs](http://www.peugeot.rs)

RCZ



PEUGEOT  
MOTION & EMOTION



# THE RESTAURANT RAMSES PHILIPPE STARCK

Ramses is a landmark culinary place in Madrid, which has become one of the pinnacles of leisure in the Spanish capital, as well as a focus point for the most cutting-edge creations and innovative ideas.

This cosmopolitan and innovating restaurant, located opposite the Puerta de Alcalá in Madrid, and designed by the prestigious studio Arquitectura Touza Asociados, has been ground-breaking since its inauguration in December 2007. Designed by Philippe Stark, its baroque and scenic interior creates a universe of luxury and sophistication which is constantly given a new, modern and transgressive

identity, with menus being renovated and the interiors being repainted.

Ramses is divided in three different areas with their own name and atmosphere, differentiated in three levels within the building. On the one hand, there is the Cocktail Bar, with an impressive bar where you can enjoy different delicates-

sen: sushi, oysters, champagnes and cocktails. From there, there is access to the Petit, the most informal Ramses restaurant, with a cosmopolitan character. Its Mediterranean cuisine, with Castizo elements, accentuates its personality during weekends and festivities with a thematic brunch.

On the top floor is the Bistró, a high-end international restaurant, with baroque-inspired design and traditional Madrid influenced cuisine. Four different dining rooms (Dior, Privée, Black and La Jaime) as well as a fifth room with showcooking where the best chefs can cook in direct for their diners, make this space unique and spectacular. In the basement, and with an independent access, is the Club, an underground-style club equipped for celebrating any type of party or event.

This is the other aspect that characterises Ramses, thought of and designed as an events venue. Each room is equipped for hosting presentations and meetings, which, together with the intricate cuisine of the restaurant, guarantees these events will be successful.

One of the most celebrated elements of the Ramses restaurant is its thematic brunches. Consecrated to different cuisine styles and offered on the weekends, the Ramses brunches attract both stylish people and those who enjoy constant innovation. They can all now taste the Asian brunch, inspired Japanese, Chinese, Philippine and Thai cuisine.





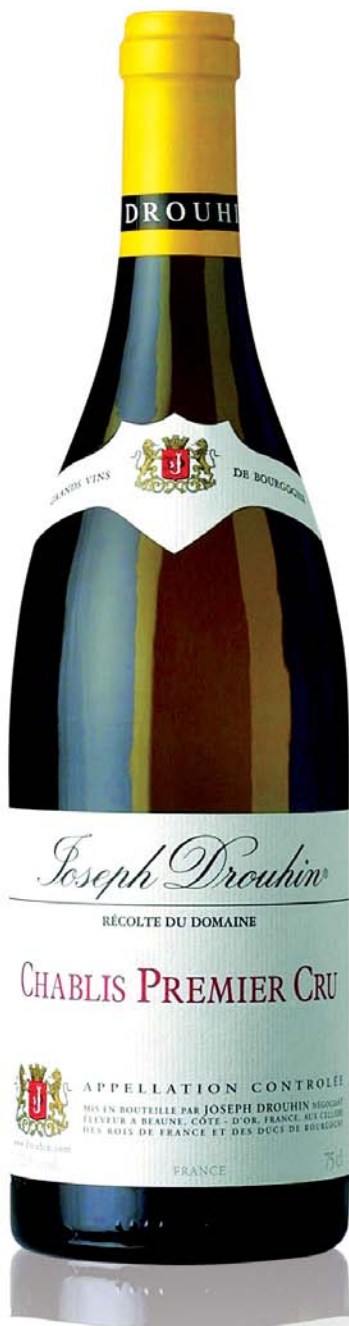
# CHABLIS



## LA MAISON JOSEPH DROUHIN

In 1880, Joseph Drouhin, who was from the Chablis region originally, chose the city of Beaune to found the business that bears his name. Out of firm conviction, Drouhin has adopted a biological and biodynamic approach to viticulture. Listening to nature: from vine to glass, at every step in the elaboration of the wine, a profound respect and deference to nature prevails.

From its very beginning, Maison Joseph Drouhin has aimed for an ideal of perfection and elegance. The style of Joseph Drouhin combines balance, harmony and character, providing infinite pleasure. Thanks to its open-minded world view, Joseph Drouhin introduces the best of Burgundy to all continents. Its active presence in many countries is the surest proof of its desire to get acquainted and understand other cultures and styles of living.



## CHABLIS BOUGROS 2007 GRAND CRU

### GRAPE VARIETY: Chardonnay

**VINEYARD - Site:** on the right bank of the Serein River, which flows through Chablis and its region. Located in the north west corner of the Grand Cru slope. It has a remarkable south east exposure and the steepest slope of all the Grand Crus.

**History & tradition:** in the sixties, when the Chablis vineyards were all but abandoned, Robert Drouhin recognized the potential of this region which had been ravaged by the phylloxera disease a century before. He was one of the first Burgundy propriétaires who set about revitalizing the area.

**Soil:** the Kimmeridgian limestone contains millions of tiny marine fossils embedded in a kind of whitish mortar which may have been once the bottom of the sea...hundreds of million years ago. This marine origin gives the wines of Chablis their unique flavour.

### TASTING NOTE BY VÉRONIQUE BOSS-DROUHIN

“A delicate and ample wine, easy to appreciate. The pale yellow color is very pure, with light green reflections. On the nose, floral aromas of acacia harmonize with vegetal notes of fern and coriander. The aromas on the nose are amplified when the wine is in the mouth, together with new notes of orange or lemon marmalade. It has a soft, round, well balanced body. The aromas of fruit are enhanced by intense mineral notes evolving towards a slightly smoky flavour. Beautiful length on the aftertaste”.

**VINTAGE:** The wines show great purity of taste and a pleasant floral style. Chablis is very mineral in character, almost briny.

**SERVING:** Temperature: 14°C (55°F).

THE NEXT ISSUE WILL  
APPEAR ON 10<sup>th</sup> FEBRUARY.

SEE YOU  
SOON!

MINI  
studio  
MAGAZIN

ministudio ■■■

FRATELLI  
SELVA

saba  
ITALIA

coincasa

teonag  
POSHE KFSI

ULTRA  
new concepts power saver

PEUGEOT